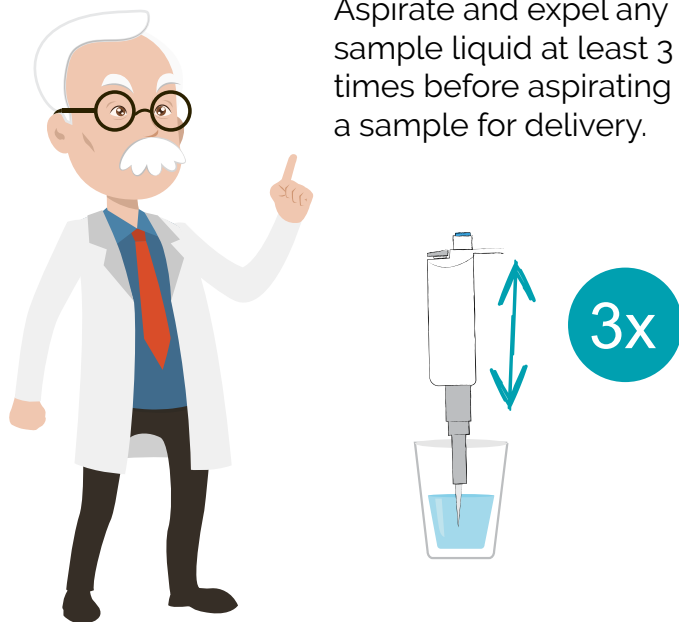


12 EASY TIPS

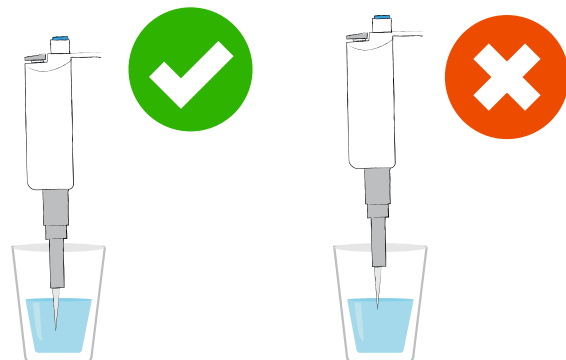
To Improve Your Pipetting Technique

1 Pre-Wet the Pipette Tip

Aspirate and expel any sample liquid at least 3 times before aspirating a sample for delivery.

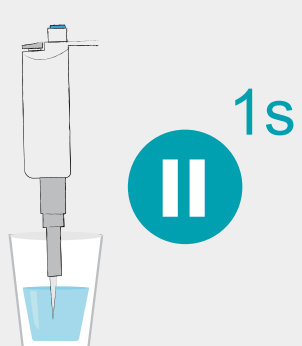


2 Immerse the Tip to the Proper Depth During Aspiration



Before aspirating, immerse the tip adequately below the meniscus. Large volume pipettes (1-5 mL) should be immersed to 5-6 mm, while smaller volume pipettes should be immersed to 2-3 mm.

3 Pause Consistently After Aspiration



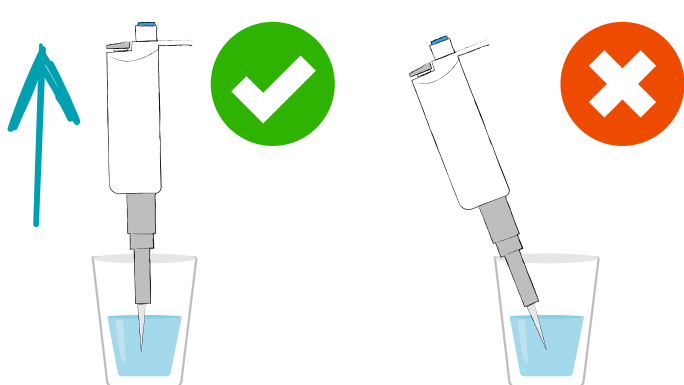
Leave the tip still in the liquid for about 1 second after aspirating the sample.

4 Use Consistent Plunger Pressure and Speed

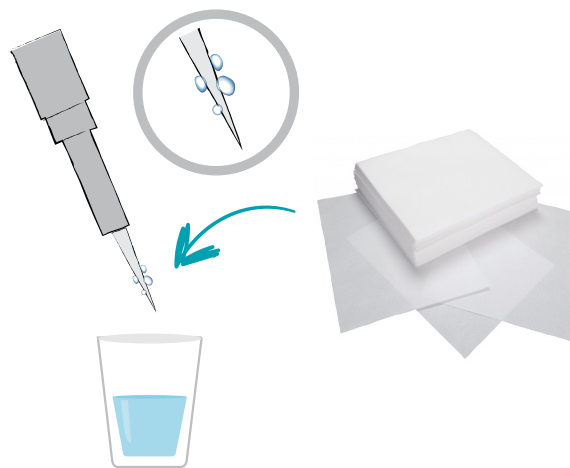


5 Pull the Pipette Straight Out

During sample aspiration always hold the pipette vertically and avoid touching the sides of the container.



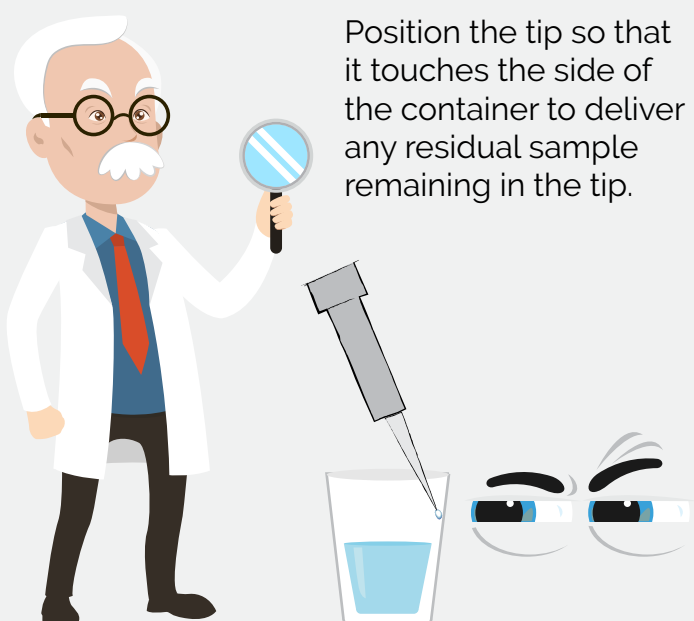
6 Examine the Tip BEFORE Dispensing a Sample



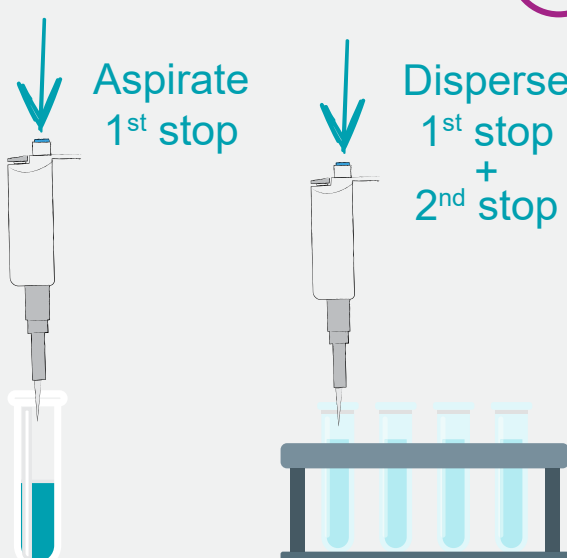
Before dispensing, carefully remove droplets on the outside of the tip with a lint-free cloth, being sure to stay clear of the tip opening.

7 Examine the Tip AFTER Dispensing a Sample

Position the tip so that it touches the side of the container to deliver any residual sample remaining in the tip.



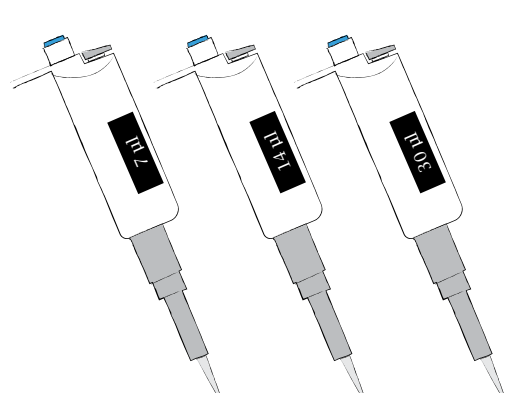
8 Use Standard Mode Pipetting



Choose "standard (or forward) mode" pipetting rather than "reverse mode" for all aqueous samples.

9 Use the Appropriate Pipette

Pipette with a volume range closest to the volume you plan to aspirate and dispense.



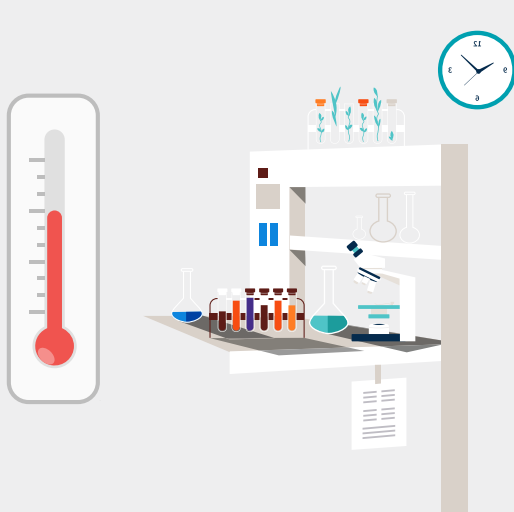
	1-10 μ l	2-20 μ l	20-100 μ l
1-10 μ l	✓	✗	✗
2-20 μ l	✗	✓	✗
20-100 μ l	✗	✗	✓

10 Use the Correct Pipette Tip



Use high quality tips intended for use with specific pipettes.

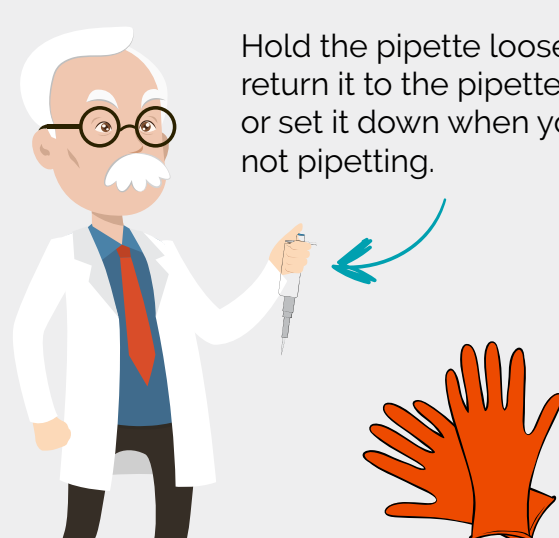
11 Work at Ambient Temperature Equilibrium



Allow liquids and equipment to reach an equilibrium at an ambient temperature before you begin pipetting.

12 Minimize Pipette Handling

Hold the pipette loosely, return it to the pipette stand or set it down when you are not pipetting.



Wear gloves to reduce body heat transfer to the pipette.

STRUGGLING WITH PIPETTING CONSISTENCY? DON'T WORRY, USE PIPETTING AID PLATR

PROVIDED BY

BioSistemika