

Data sheet

SRB cytotoxicity assay

Cat. No: CA050
1000 assays

Introduction

The **sulforhodamine B (SRB) cytotoxicity assay**, which was developed in 1990, remains one of the most widely used methods for in vitro cytotoxicity screening. The assay relies on the ability of SRB to bind to protein components of cells that have been fixed to tissue culture plates. SRB is a bright-pink aminoxanthene dye with two sulfonic groups that bind to basic amino-acid residues under mild acidic conditions, and dissociate under basic conditions. As the binding of SRB is stoichiometric, the amount of dye extracted from stained cells is directly proportional to the cell mass.

The fixed dye is solubilized and is measured photometrically at OD 540 nm with a reference filter of 690 nm. The OD values correlate with total protein content and therefore with cell number.

The SRB assay is sensitive, simple, reproducible and more rapid than the formazan-based assays and gives better linearity, a good signal-to-noise ratio and has a stable end-point that does not require a time-sensitive measurement, as do the MTT or XTT assays.

This assay has been used for high-throughput drug screening at the National Cancer Institute (NCI).

Kit Contents

| | |
|----------------------------|---------|
| SRB Dye (Sulforhodamine B) | 0.4 g |
| Fixative Reagent | 2X50 ml |
| Dye Wash Solution 10X | 2X50 ml |
| SRB Solubilization Buffer | 4X50 ml |

Storage condition

The kit is shipped at ambient temperature. Store all kit components a room temperature, protected from light.

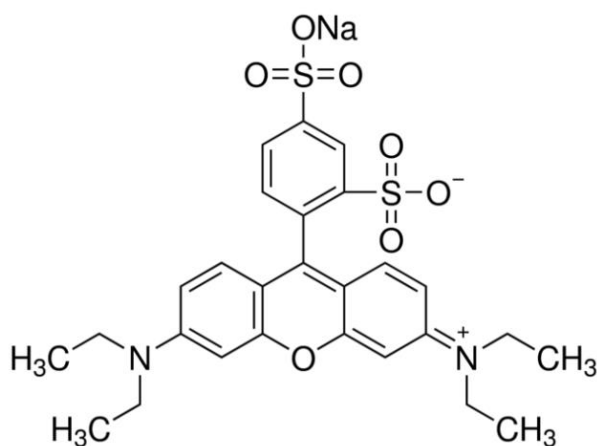
Preparation Instructions

Wash Solution: Prepare the wash solution by diluting the **Dye Wash Solution 10X** 10-fold with water (9 volumes of water to 1 volume of **Dye Wash Solution 10X**).

Sulforhodamine B Solution: Dissolve content of SRB Dye vial (0.4g) with 100 ml Wash Solution (**Dye Wash Solution 1X**). Store the solution in a dark (amber) bottle at room temperature.

Precautions

Some components of this kit are potentially carcinogenic or corrosive; it is advisable to work in a hood and to wear glasses, gloves and a mask.



(continued on reverse side)

Distributed by:

Lab Unlimited
CARL STUART GROUP

Tallaght Business Park
Whitestown, Dublin 24,
Ireland
D24 RFK3

Tel: (01) 4523432
Fax: (01) 4523967
E-mail: info@labunlimited.com
Web: www.labunlimited.com

Quatro House, Frimley Road,
Camberley,
United Kingdom
GU16 7ER

Tel: 08452 30 40 30
Fax: 08452 30 50 30
E-mail: info@labunlimited.co.uk
Web: www.labunlimited.co.uk

CANVAX

Assay procedure

1. Cells are grown in a 96-well plate in 200 µl growth medium.

Note: The optimal conditions for monitoring cytotoxicity are to have the cells in the log phase of growth and not exceed to 10⁶ cells/cm².

2. Without removing the cell culture, gently add 100 µl cold **Fixative Reagent** to each well.

4. Incubate the plate for 1 hour at 4°C.

5. Wash the wells four times with 200 µl/well distilled or de-ionized water and remove excess water using paper towels. The wash removes excess fixative and serum proteins.

6. Incubate in a 37°C incubator for 45 minutes to remove excess wash (or Air dry the plates overnight if storage is required).

NOTE: After fixing and drying, the plates can be stored indefinitely at room temperature.

7. Add 100 µl **Sulphorhodamine B Solution** to each well of the dry 96-well plates and allow staining at room temperature for 30 min in the dark.

8. Remove the **Sulphorhodamine B Solution** by washing the plates quickly with **Wash Solution**, four times, to remove unbound dye.

9. Dry the washed plates in the air until no moisture is visible.

NOTE: Once the Sulphorhodamine B Solution has been added the plates should be protected from light.

10. Solubilise the bound SRB by adding 200 µl of **SRB Solubilization Buffer** to each well and shaking for 5 min on a shaker platform.

11. Read the optical density (OD) at 550-580nm, 565nm is the absorption maximum, with a microplate reader. If intense colour is visualized (> 1.8), a suboptimal wavelength (490-530 nm) may be used instead. Measure the background absorbance with a reference filter at 690 nm.

The OD of SRB in each well is directly proportional to the cell number so the OD values can be plotted against concentration and the IC50 determined.

CALCULATION OF RESULTS

Calculate the percent cytotoxicity for a given experimental treatment, by using the average absorbance values from experimental, cell control. Ensure that absorbances are blanked with the cell free medium controls.

$$\% \text{ Cytotoxicity} = (100 \times (\text{Cell Control} - \text{Experimental})) \div (\text{Cell Control})$$

For Research Use Only.

CAUTION: Not for human or animal therapeutic or diagnostic use.

For any questions, supplementary information or suggestions, please contact the technical support department of Canvax Biotech by email to info@canvaxbiotech.com.

Distributed by:

Lab Unlimited
CARL STUART GROUP

Tallaght Business Park
Whitestown, Dublin 24,
Ireland
D24 RFK3

Tel: (01) 4523432
Fax: (01) 4523967

E-mail: info@labunlimited.com
Web: www.labunlimited.com

Quatro House, Frimley Road,
Camberley,
United Kingdom
GU16 7ER

Tel: 08452 30 40 30
Fax: 08452 30 50 30

E-mail: info@labunlimited.co.uk
Web: www.labunlimited.co.uk